

WTM

WORKING TRIALS MONTHLY

November 2013

Volume 28 No 8

2013 KENNEL CLUB CHAMPIONSHIP WINNERS



PATROL DOG WINNER

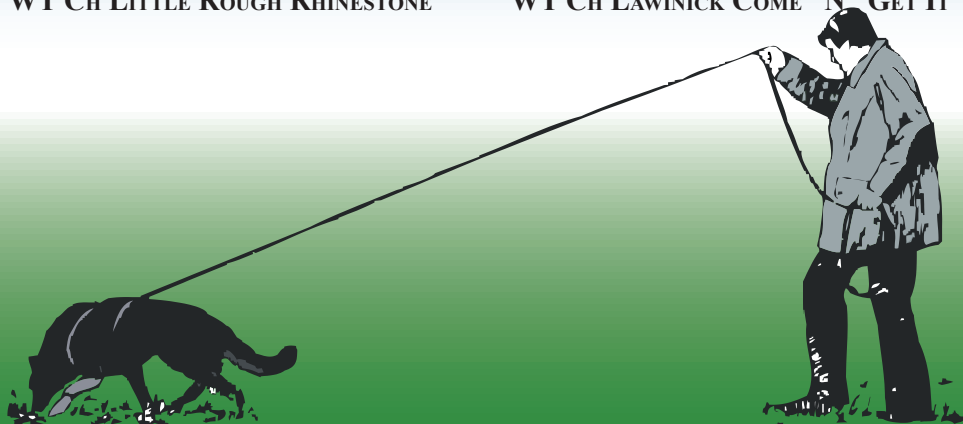
LEE PAYNE WITH

WT CH LITTLE ROUGH RHINESTONE

TRACKING DOG WINNER

TONY LOCKYER WITH

WT CH LAWINICK COME "N" GET IT



THE ONLY MAGAZINE FOR THE TRIALS ENTHUSIAST

WTM PUBLISHING

Green Farm
Fair Oak, Eccleshall
Staffordshire. ST21 6NT

Tel.: +44 (0)1630 620292

Editor Mark Skillin: mark@workingtrialsmoonthly.co.uk
Assistant Editor Anne Bussey MSc: anne@workingtrialsmoonthly.co.uk
Content co-ordinator Judy Meekings: judy@workingtrialsmoonthly.co.uk

Please send Trial reports to:- reports@workingtrialsmoonthly.co.uk
Please send advertisements to:- adverts@workingtrialsmoonthly.co.uk

SUBSCRIPTION RATES

U.K.

12 Months	£60.00
6 Months	£35.00

Overseas:

12 Months	£70.00
6 Months	£40.00

Advertising Rates

Black and White:	Full Page:	£60
	Half Page	£34
	Quarter Page	£23

Colour:	Full Page:	£99.00
---------	------------	--------

All advertising includes VAT and must be pre-paid.

Copy must be received by 5th. monthly for inclusion in the following month's magazine.

<http://www.workingtrialsmoonthly.co.uk>

WWTM

WORKING TRIALS MONTHLY

CONTENTS

- Page 3 Editorial
Page 4 Entries Closing
Page 4 Readers Letters
Page 5 Club Focus
Page 6 Book Review
Page 6 News from the Kennel Club
Page 8 Training for Trials
Page 11 Animal Health Trust

TRIAL REPORTS

- 16 Wessex WTS CH
20 Benfleet WTS OP
23 North East Counties WTS OP
24 ASPADS CH
26 Welsh Kennel Club OP
29 Hampshire WTS CH
31 BAGSD OP
32 Scottish WTS CH

Cover photo by Judy Meekings

The opinions expressed within this magazine are not necessarily those of the Editorial staff. Written permission must be obtained for any item to be reproduced whether in newsletters or on the Internet.

©

EDITORIAL

As usual at this time of year we have delayed the printing of this month's magazine until the Kennel Club Championship results were in: Congratulations go to Tony Lockyer with WT.Ch Lawinick Come "N" Get It At Hartshill for winning the TD stake and to Lee Payne with WT. Ch Little Rough Rhinestone for winning the PD stake. Hopefully a full report will be included in next month's issue.

Besides the Kennel Club Championships there have been two further championship trials this month. Congratulations go to Gary Haim with WSD WT.Ch. Waggerland Dilemma who were judge John West's winning team at Poole and District's TD trial at Ringwood and to Jo Magness with Lizline Mandolin for winning the PD ticket under the watchful eye of judge Charlie Taylor at Midland Counties Trial in Newark.

We are trying to get all the information in for the 2014 trials calendar so we can print it in Decembers issue. Could any societies that have finalised their dates for next year please send them in to judy@workingtrialsmonthly.co.uk.

We have had a lot of enquiries concerning Anne's training articles, and whether they are going to be released as a booklet. Well, the short answer is yes! The 'Sendaway and Redirect' will be released as the second title in the 'Teach Your Dog to Want To;' series in December – just in time for your Christmas stocking!

MARK SKILLIN
EDITOR

READERS LETTERS

Dear Ed.

At the risk of being shot down in flames I will put my name to my comments if only because I know from personal experience how difficult it is trying to fill a magazine with interesting and useful content with no contribution from the readers, and so perhaps this will fill a space.

Firstly it should be pointed out that we are not alone in facing the demise of our sport, and as I am a regular reader of Dog World (for my sins), I am well aware from the various columns and reports that nearly all dog activities are feeling the pinch, with the notable exception of agility. Why, we may ask, is agility doing so well when all the other activities are struggling, and what can we learn from them that may help us save our own sport? Now I have very little knowledge of Agility, and am certainly no expert, but it is obvious that the main difference is that most breeds are catered for, and although a certain degree of mobility is required from the handler, good training can offset the need for too

much physical exertion on their part, so with few exceptions most people can have a go at some level. However, this in no way reflects on the serious stuff at the top end of the competitions, and by dividing up the classes into sizes the best of all the breeds, whatever their size, will find its way to the top in its own class. However, we do not see the small dogs competing with the bigger ones as they have their own classes, which seems to work very well, and encourage everyone to have a go. Needless to say the very big or heavy dogs are still at a disadvantage in this sport which relies so much on speed, so do you think they should have a debate about increasing the time allowed to cater for the giants? I think that Agility has got it right in that they do have classes to cater for everyone, even including the ABC (anything but collie) stakes at some shows, so those people with pet dogs who want to have a go are welcomed and encouraged.

If we compare this with working trials we will see how impossible a challenge it is to give the same degree of inclusion to the few small dogs that want to have a go at trials,

DON'T FORGET ENTRIES CLOSING

November

6th	Scottish Kennel Club (Jedburgh, ends 1st December)	CH	CD UD TD
6th	ASPADS WTS (Enfield, ends 8th December)	CH	CD UD WD
27th	Yorkshire WTS (Beeford, ends 31st December)	OP	CD UD WD TD

ENTRIES MUST BE RECEIVED BY THESE DATES

and with one or two notable exceptions not many of these are likely to go any further than UD and this is not always about jumps. Now I know that Marnie, Nick and other successful small dog handlers will take me to task on this, but in my experience it is not the jumps but the sheer commitment required to slog round a track in horrendous conditions, find useless pieces of rubbish without reward, and then perform pointless heelwork and run to nowhere for no reason is what chokes off the majority of small breeds, however much they may love jumping, and with the exception of those experienced handlers who have had success it chokes off most of the owners as well. If we had a high number of small dogs regularly qualifying UDEX and unable to go on because of the jumps perhaps there would be a case for doing something about it, but at the moment that does not seem to be happening. However, if the object of the exercise is just to swell the numbers taking part in trials perhaps we should take a leaf out of the Agility book and start encouraging small dogs by putting on small dog stakes, although isn't that similar to what we are doing now in CD, UD and Introductory Stake, and yet very few small dogs are coming through.

Finally we must realise that the fall in numbers in our sport like every other is mainly due to expense and no amount of encouragement will have any effect on those of us who are balancing trials with the budget.

WENDY BEASLY

THANK YOU

I would like to thank everyone who sent cards and called to say "Well done" to

me and Mac on winning the ticket at Hampshire this year.

KEN COLEMAN AND MAC

CLUB FOCUS

SOUTHERN ALSATIAN TRAINING SOCIETY

WORKING TRIAL HEELWORK AND AGILITY CLINIC

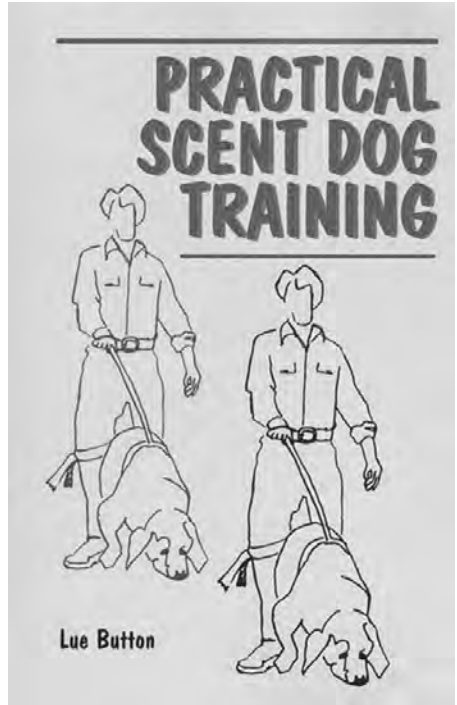
Saturday 31 August 2013

MEMBERS' DAY

Sunday 1 September 2013

How lucky we were with the weather the whole weekend after the heavy downpours of rain over the Bank Holiday! Both Jane Wood, covering heelwork, and Anne Challis, the jumps, gave the attending members very professional and informative instruction in their specialised areas. Most of all it was fun for the dogs and handlers, whether it was a novice wanting more general help or an experienced competitor needing to fine tune their performance on the Trials field. We had sixteen members attend, which was a good number to manage in the time available and make the day viable. THANK YOU SO MUCH Jane and Anne for all your expertise and giving up a precious Saturday to be with us. We will all benefit from your help in the future. On the Sunday it was the members Day where we could put into practice what we learnt on Saturday! Frances Webb, judging the Control tests, had an entry of one in Puppy, six in Beginners, and five in the Graduate Test. Lee Payne judging the Open Control and Agility Test had an entry of twelve. Novice Tracking was taken by Jane Gray, with ten entered, and our own Chairman, Les Allen, judged the Senior

**PRACTICAL SCENT DOG
TRAINING**



By Lue Button

Tracking, attracting an entry of eleven members. Everyone came away having achieved success with their dog whatever their level of work. The attending members were a lovely bunch, with quite a number of new faces, which is very encouraging for the future of Working Trials.

The steward and tracklayers were: Carole and Peter Brooke, Sue Redshaw, Den Webb, Linda Allen and Dave Currier, who all gave up their Sunday to help others progress working their dogs. I cannot thank the judges and stewards enough for their support and help making this event go so well, especially making sure that all the members and their dogs came away with a positive experience.

Most of all, of course, we have to thank Stephanie Allsopp for providing access to your land and barn.

Just out of interest, ‘spending a penny’, I guesstimated, cost £2 per ‘go’ this weekend!!! Obviously too much time on my hands.

SHARON CARTER

NEWS FROM THE KENNEL CLUB

The Kennel Club has made an amendment to a recently introduced Regulation to clarify the criteria for P.D. (Patrol Dog) judges in working trials.

Regulation I24.b.(6) (Approval of Judges)

TO

Have attended a Kennel Club Practical Working Trials seminar. In addition P.D. judges must have attended a Kennel Club P.D. Regulations and Judging Procedure Seminar and passed the relevant examination (effective 1 January 2014). (Amendment underlined)

Another book by an American author who discusses the differences between tracking, trailing and air scenting and their value in different scenarios ie competition v reality (finding criminals/avalanche victims etc).

There are detailed lesson plans, which lump tracking and trailing together; air scent lesson plans are separate.

Lue does say that whatever your discipline, tracking lays a strong foundation for all the other scent skills

There is an emphasis on recording your progress ie what you did, what happened and what needs additional practice (*she*

gives an example of how this might be laid out).

I particularly like the chapter on the effects of age; humidity and temperature; air flow, wind, terrain; (*love the term lofting*) and pools;

Consideration is given to how to train the dog to indicate (*article or person*) ie via vocalisation, position or retrieve.

The chapter on tracking and trailing includes equipment needed and how to lay a track and lesson plans cover: first track and first turn; multiple turns; partially concealed article; person at end of track; blind tracks; cross tracks; multiple tracklayers; scent pools and obstacles; discrimination proofing; drop trailing and each is followed by a section on things to think about.

A chapter on air scenting covers victims or evasive subjects.

The section on evidence searches may not be relevant to our sport but useful in domestic terms! It also focuses on how to train dogs to locate (*and how to deal with*) gases and dangerous items eg knives etc.

There is a chapter on disaster searching and how to start; with specific lesson plans on agility. It also touches on bad footing and vehicle disasters.

The final section of the book concentrates on training your dog for the AKC TD and TDex tests with 24 hour tracks, 12 hour tracks, scent and physical obstacles, mixed obstacles, cross tracks etc.

Lue asserts that atropine, antispasmodics, anaesthetics, antihistamine and belladonna

depress scenting ability and caffeine and amphetamines temporarily stimulate it.

This book is for the real scent enthusiast who may have interests in areas other than that of Working Trials and/or want to extend their dog's skills in different arenas (*competitive or otherwise*) if, for example, it has retired from competition or cannot compete for various reasons. The vast majority of the content is not focused purely on tracking. If you are a "nose work freak" this is the book for you!

ALLYSON TOHME

BRYAN'S LEATHER DOG WEAR

HAND MADE LEADS

COLLARS, HARNESSES ETC

www.bryansleatherdogwear.yolasite.com

TEL: (01670) 519162

MOB: 07939167493

SENDAWAY PART 5

Look – No Pole!

Now you have everything in place to teach an actual sendaway! Up until now there has always been a pole. In the beginning it was very visible and loaded with a reward. Later the reward was sometimes at the pole: but not always. At other times the pole blended into the background and was less visible, or it only became visible after the dog had left the handler and got over the hill, when a pole came into sight. Sometimes on arriving at the pole, your dog has not been rewarded, but given another command, he has been told to wait. All these factors have reduced your dog's dependence on the pole. It will now be quite an easy step from here to a real sendaway!

As always when progressing any exercise, go back a step before you go forward. So preferably, if possible return to his original base sendaway point and send him to a green pole that is not loaded with a reward. Tell him to wait when he gets there and follow him up. Praise him there, but do not give him his reward. Instead, pick up his pole and walk back with him and the pole. Now set him up again in the usual way. He will look towards his usual point because he knows this game – even though he cannot see the pole. Send him and tell him to wait when he gets there and follow him up straight away and reward him at the sendaway point. Now he is learning that if there is no pole he will be rewarded. Keep it short for now because; a) it should be easy for him to get it right, and, b) you have to follow him up to reward him!

Now you have added another variable to your training; sometimes there will be a pole, sometimes there will not. Just because there is no pole, it does not mean there will

be no reward. Introduce this variable at other known sendaway points starting as above by sending him to the green pole before sending him to nothing. Always keep it easy for your dog to be successful so as not to dampen his enthusiasm to do this exercise. Before long you will not need to place the pole first – he will have learnt to go to nothing, ever hopeful that a reward might follow. As his confidence grows you will be able to lengthen the sendaway as you did before. He will soon be going out confidently, whether or not there is a pole in sight because he will have learnt that the pole is not a reliable predictor of an imminent reward. He will learn to listen to you. He might be rewarded for the sendaway, or he might be recalled and rewarded for that, or he might be sent and then commanded to wait – and then be rewarded for that.

Getting the Balance

By adding only a very brief 'wait' in the early stages of training before recalling your dog from the sendaway point, you will keep his interest and enthusiasm. But be warned, if you always recall him fairly quickly to get his reward from you, he might well stop going right to the pole (or boundary) and turn back to you as soon as he clocks that his reward is not on the pole! He will be anticipating where the reward is coming from. To avoid this happening, you will need to integrate his 'wait' training with his 'sendaway' training. It is easy to do this when the sendaway is short by sending him and following him up whilst commanding him to 'wait.' Join him at the pole and reward him there: But he will have to do a full length sendaway and then wait – at a distance. Build it up gradually.

Now you have three points of reward;

1. On the pole at the 'send to' point.
2. From you, at the point of recall.
3. At the sendaway point to reward him

for waiting (when you get to him).

Now is the time to use your skill as a trainer to reward the appropriate behaviour;

- If your dog tends to turn and run back to you, you will need to work on the 'wait' and reward him at the sendaway point, after telling him to wait and following him up.
- If he runs the distance but, is then inclined to sniff along the hedgerow, you will want to recall him quickly and reward him as soon as he gets back to you (rather than nagging him to wait). He will soon learn that listening to you is fun and brings great rewards – this dog will enjoy redirects!
- When building distance, or the confidence to run from you, the reward should be out there on the pole.

By working on these variables you will be able to develop the skills your dog needs as you progress his training. Remember the key word here is 'control,' if you send him and tell him to wait at the boundary, do not reward him if he comes back before you call him. Instead, set him up again and send him straight back, tell him to wait and this time follow him up and reward him at the pole. If he does not wait – he will not be rewarded! I find it best not to tell him off – he did after all, do the sendaway: he was just a bit keen to get back.

At a trial a few years ago I watched a dog do a super sendaway to a wire fence, the owner shouted 'wait' to the dog and sure enough the dog waited. It looked like ten marks in the bag until the judge told the handler to recall his dog. The handler called the dog... nothing. He called again, still nothing. He called and called, jumped around, begged and pleaded, but the dog would not move from the sendaway point. This dog had obviously been rewarded at

the point of the sendaway too often and was clearly saying to his owner, "I have done the sendaway and I am not going to move until you come and reward me!"

... Balance is the key.

Generalisation

When arriving at a control field, the first question we ask fellow competitors standing around the gate is, "Where is the sendaway?" The reason for this is not just that it offers twice the amount of marks than heelwork in all stakes above CD, but that it holds so much potential for variation.

It could be up hill, or downhill. It could be to a tree, a hedge, a trough, a gate, the fence, or a patch of dark vegetation in the middle of the field: it could be anywhere in the field!

When I get to a trial, if the sendaway is to a tree on the hedge-line, my spirits are raised as I regularly train to a tree on the boundary so I think I have a good chance of my dog going to it.

A well trained dog should never encounter anything new at a trial. Your job as his trainer is to take him with the pole loaded with his reward to as many different locations as possible. Place his pole in front of a tree; place it in front of a gate, the hedge, the fence, and anything else you can find. Training like this will ensure your dog learns to go in the direction you face him, not to just look for the backdrop to which he is accustomed. Sometimes when competing, the dog does something unexpected that illustrates a misunderstanding has occurred in our training. For example, following the above scenario; if the sendaway at the trial was to a gate and I set my dog up and sent him in that direction, only to find he veered off halfway to the gate and headed for the tree, this would tell me that I have trained towards the tree too often and I need to find a gate and train him to that. It

does not tell me my dog is disobedient – it tells me what I need to train!

In a Nutshell

My aim is to train my dog to continue in the direction of my set-up, until either I give him another command, or he gets to the boundary (in which case he will stop and listen for another command). I want to generalise the backdrop so my dog does not look for a particular feature, but he simply continues in the direction he is faced. I will then have a ‘sendaway’ - not a ‘send-to!’

Remember that a straight line does not always mean at ninety degrees to the boundary from the middle of the field. A straight line could be parallel to the hedge just a few metres from it, or it could be to a corner of the field. Do not get hung up about angles, just think simply (as your dog does) it is a straight line – towards whatever is in front of him.

VSR – Again!

I keep banging on about a Variable Schedule of Reinforcement (VSR). This is not because I like big words; it is because a VSR – or lack of it - is the main cause of dogs that work well in training, not performing at a trial. Many people have said to me that their dog works well in training, but sticks two fingers up at a trial! Actually, dogs do not think like people. If the dog enjoys training, why would it not like competing? What is the difference from the dog’s point of view? Is it that he has learnt that he always gets rewarded during training, but he never gets rewarded at a trial? Is it that he sees or smells his reward during training, but not at a trial? Once a dog learns to make this distinction, performance will deteriorate and it is very difficult to re-motivate the dog at trials. He may have made the connection that at the end

of a long car journey, he is never rewarded for his sendaway. He might have learnt that when two strangers (judge and steward) are talking to you, there will be no reward. Or he might have learnt that when you act like a nervous wreck, there is never any reward. If you were paid to clean cars every day, how would you feel if some days you were not paid? Suppose you noticed that you were never paid on days that your boss wore a tie – would you become unwilling, or less enthusiastic to work, when he turned up wearing his tie?

Training on a VSR will ensure your dog never makes these unwanted connections. You cannot train your dog at a trial, you cannot reward your dog at a trial; therefore you must train your dog to accept that he is not always rewarded in training. However, if you suddenly stop rewarding your dog once he knows the exercise, he is on the fastest route to extinction: that is the fastest way to stop him working. That is exactly what happens at a trial if your dog is not fully prepared.

Your job is to muddy the waters: to blur the line between training and competing. So that from the dog’s perspective, there is no difference between training and competing; there might be a reward out there – or there might not. There might be a pole – there might not. He might be rewarded for the recall – he might not, but above all you should both enjoy working together as a team.

Anne Bussey

The Animal Health Trust Breed Club Health Seminar

Thursday 12 September 2013
Lanwades Park, Newmarket

Seasonal Canine Illness: Review of Investigation
Charlotte Robin MSc, SCI Research Co-ordinator

Epidemiological approach started in 2010

The AHT were first alerted to the problem after the illness was reported in the Nottingham Post on September 28 2010 which is when the epidemiological approach was commenced.

- Questionnaire for each study area (Sherwood Forest, Clumber Park, Sandringham Estate, Thetford Forest); Rendlesham Forest was added at a later date.
- Population at risk = dogs walked in study area
- Was the dog affected (CASE) or not (CONTROL)
- Case definition: dog that showed two or more of the clinical signs (vomiting, diarrhoea, lethargy, abdominal pain, muscular tremors, pyrexia) within 24 hours of walking in woodland area
- Compare % exposure in cases and controls

See on line questionnaire here:

<http://www.aht.org.uk/cms-display/preworkingForm.html>

Case Study

- Shetland Sheepdog
- Two year old male entire
- Travelled from Sutton Coldfield, West Midlands (visited Sandringham Estate September 2011)
- Owners arrived on Sunday 11 September, dog became ill on Tuesday 13 September and taken to local vets
- Clinical signs were sickness and abdominal pain
- Owners had two dogs with them, both dogs were walked on the same route (walked the main route to the shop before the dog became ill) and kept on a lead at all times
- The owners have been coming to the site for 40 years (with dogs). Had their first case two years ago; the dog was euthanased.
- Returned in 2010 with two dogs, both were fine. They also came to the site in spring 2011 with the dogs and both were fine.

Case Reporting

- Sandringham Estate produced the majority of responses

Site	Cases				Controls			
		2011	2012	Total	2010	2011	2012	Total
Clumber Park	2 <u>1</u>	2	28	32	40	23	114	177
Rendlesham Forest	0	34	14	48		13	75	88
Sandringham Forest	35 <u>6</u>	51 <u>3</u>	22 <u>2</u>	108	180	26	70	276
Sherwood F	4	10 <u>1</u>	25	39	13	3	72	88
Thetford Forest	12 <u>3</u>	7	19	38	114	33	112	259
Total	53	104	108	265	347	98	443	888

- Responses from three consecutive years (underlined = fatal cases)
- Fatal cases reduced each year; direct result of increased awareness with dog owners and vets

Temporal Distribution

When the figures were broken down for Sandringham, the majority of cases occurred in September.

Spatial Distribution of cases

- A map of the study was made with a grid superimposed
- A cross was put in each square the dog was walked in
- Pinpointed where cases were occurring
- Compared the spatial density of cases and controls

Field Investigation

No evidence for:

- Blue-green algae
- Bracken spores
- Exotic toxic plants
- Recent abundant toxic fungi
- No plant or fungi species identified that were considered poisonous through contact alone – no evidence cases had ingested anything during the walk
- No exotic toxic plants or fungi (woodland habitat considered botanically typical and probably unchanged in the last 50 years) - cases only been described in the last three years
- Featured on BBC Countryfile (21 October 2012) which had an audience of approximately 6m
- Subsequently led to 700 enquiries
- More than 650 questionnaires submitted (in two weeks)

Many causal theories proposed for SCI

- Rat poison
- Slug poison (*metaldehyde*)
- Organophosphates

- Lead Poisoning
- Blue-green algal toxins
- Fungal toxins
- Frog toxins
- Bracken spore
- Heather
- Dogs Mercury (*Mercurialis perennis*)
- Parvovirus infection
- Norovirus infection
- Lyme's Disease
- Woodland Ants
- Mites
- And More Besides

Combination of epidemiological study, site visits, soil/water samples, testing of veterinary samples = many now considered unlikely

Neotrombicula Autumnalis (Harvest Mites) (old reports)

“Over the last week our practice has seen 11 cases of presumed SCI which have had to be hospitalised and at least that many again which have been less serious.

All affected dogs have walking in a woodland in the local area

All of this year's hospitalised cases have active Neotrombicula Autumnalis infections and have vomiting, diarrhoea, anorexia and lethargy “

Claire Ronnie MRCVS

“One of my colleagues has been treating a case of this over the weekend and a colleague in the neighbouring practice also has 3 cases on IV fluids

All dogs also have ventral rashes and harvest mite infections”

Janice Dixon MRCVS

“While investigating the deaths and illness of several dogs with the woodlands of my region, I walked through a certain wood where three or four dogs had been taken ill, two subsequently dying

I walked the wood systematically, doing a type of transect survey. Most of the time I was waist deep in bracken.

When I had finished and was taking my boots off at my car, I noticed what I first thought was pollen on my socks. On closer examination I could see they were tiny insects (which I later discovered to be Harvest Mites)

While investigating the dog and other animals of the region that were going down with the mystery illness, I was getting the same reports over and over again; that the animals were infested with orange, small insects, described as poll on several occasions”

Anthony Bird, Lead Wildlife Advisor, Natural England

Frequently asked Questions

What is the risk of my dog being affected?

- Difficult question to answer
- Only a small proportion of dogs being walked in affected areas become ill
- It is thought the risk is lower in winter months
- No cases reported between November 2012 and August 2013
- Cases stopped being reported after “cold snap”
- Advise dog owners to keep their dogs on a lead

Can it be transmitted between dogs?

- Probably not
- Dogs that were walked together did not always ALL become affected.

Sandringham 2010

- 2 dogs 1 x SBT entire male, 1y and 10m old and 1 x JRX, 8y and 11m, female, neutered
- Same management, health status, behaviour during walk
- JRT affected SBT not

Sandringham 2011

- 4 dogs 2 x BC, 1x toy poodle, 1 x SpanielX; aged between 11m and 12y, all neutered
- 3 dogs affected oldest collie not affected
- Dogs that stayed on paths were not as ill as the others

Sherwood 2011

- 2 dogs walked together (1 x lurcher, 11y, male, neutered; 1 x Collie, 10 y, female, neutered)
- Same management, health status, behaviour during walk
- Both affected

What is being done in the way of testing?

- Natural water sources have been tested by the Environment Agency for the presence of blue-green algae.
- Natural England tested samples in 2009 and ruled out any man made poisons (carbamates, metaldehyde, organophosphates, paraquat, diquat, rodenticides and strychnine).
- Nottingham University are carrying out investigations into cyanobacterial toxins (blue-green algae)
- Animal Health Trust is archiving samples sent to them by vets but preliminary tests have been negative (blood, tissue samples etc post mortem)

What should I do if I think my dog has SCI?

- Seek veterinary advice immediately
- Majority of cases treated by a vet recovered within a few days

- Mortality rate is very low (approximately 9%)
- Complete one of the AHT SCI questionnaires

What should I do if I have walked in one of the study areas and my dog has not been affected?

- You can still complete a questionnaire
- Information from control dogs is vital to AHT investigation
- The AHT ideally need a ratio of 4:1 (controls to cases) to ensure analysis is reliable

What is the AHT doing to help?

- Website to provide up to date information and on line version of the new questionnaire (www.aht.org.uk/sci)
- Email sci@aht.org.uk
- Email alert system to provide latest information to those signed up.
- Increasing awareness and notifying owners by providing leaflets and posters to affected areas.
- Raising awareness with vets through publishing papers and presenting results at veterinary conferences and email alert.

What can you do to help?

- Raise awareness, spread the word
- If you visit a study area, fill in a questionnaire
- Sign up to AHT email alerts
- “Like” the AHT on Facebook, follow the AHT on Twitter
- Donate to the AHT SCI fund

The AHT would like to thank the following organisation for their support

- The Kennel Club
- Merial
- Sandringham Estate
- The Caravan Club
- The Camping & Caravanning Club
- Centre Parcs
- Forestry Commission
- National Trust
- Natural England
- Nottingham County Council
- Dr Mark Spencer and Dr Annie Baker (The Natural History Museum)
- Dr Becki Lawson (Institute of Zoology)
- Professor Mark Stevenson (Massey University)
- University of Liverpool
- Public Health England
- Anderson Moores Veterinary Specialists

Allyson Tohme

TRIAL REPORTS

WESSEX WORKING TRIALS CLUB CHAMPIONSHIP TRIAL

24th - 30th June 2013

Upottery

TRIALS MANAGER'S REPORT

Entries were much improved this year, with an overall total of ninety five teams competing, and it was exceptionally pleasing to have thirteen competitors in PD. The weather was kind to us this year; all days were warm and sunny with just one light shower late on Wednesday afternoon. Tracking was as usual on well grown grass, although I did have one hiccup, as on Monday lunch time I had the dreaded phone call from the farmer to say that he was going to cut the fields we had used for WD that morning, which meant I had to make some urgent changes for the remainder of the week.

I will start my thanks in the usual manner by giving a big vote of thanks to our farmers; they were all great and showed great interest in the trial by watching and offering assistance. Secondly I would like to say thank you to our judges, Jeff Poole, Judith Owens Poole, Maureen Regan, John West and Tony Lockyer, for PD, WD, UD, CD and Veteran respectively, for giving their time and expertise. Many thanks also to all their tracklayers and stewards - I will leave it to them to give individual mention but collectively my thanks to you all for doing an excellent job. To the escorts Liz, Sue and Val, again many thanks for getting everyone to the right place on time. To the ladies in the kitchen, mainly Jacquie,

Margery, Barbara and Irene, who kept us all well fed and watered, many thanks for looking after us so well.

My gratitude to Margery for producing the Schedules, Catalogues, Prize Cards and Certificates - you did a grand job. Finally, I would like to say thanks to the competitors; you were all great and considerate at all times. Congratulations to all the qualifiers, especially Lee Payne and WTCh Little Rough Rhinestone on winning the PD Ticket. I wish you all good luck at future trials.

BRIAN RISTE

STAKE: UD

Judge: MAUREEN REGAN

**Tracklayers: Lyndsey Poole (3 days),
Mary Hansell (2 days), Pat Tag (1 day)**

**Square and C/A stewards: Tony Lockyer
(2 days), Mary Hansell (1 day)**

What an amazing summer we've had. I think it has been wall to wall sunshine for 3 months, and it's hard to wish to be at a better place in the summer than Wessex Working Trial. Lush fields, beautiful scenery, and great company.

Thank you to Wessex WTC for the judging appointment. Thanks to Brian Riste for being Trials Manager and base steward. Thanks also to "The Team" - escorts, catering and shop. Sorry if I have missed anyone out, but we (trialists and judges) appreciate everyone who contributes towards making a Trial successful. Add to that the Farmers. What a helpful bunch they were. One farmer, who had the morning UD tracks on his land, was so interested he

came and watched every track, never being intrusive. He directed the competitors to their track and at the end of the week helped us pick up our boundary poles. Wow! Thank you too, to the competitors of the morning tracks who, when I introduced them to the farmer were very courteous and appreciative towards him. Thank you to my tracklayers who did a superb job under the guide of Lyndsey –thanks, Lyndsey, for being a good coach. Thank you to Tony and Mary for laying the squares just as I wanted them - I think a few competitors did a double take when they saw “Tony Lockyer” was their search steward. I did hear a few comments to their dogs of “Don’t you dare show me up in front of Tony.” Thanks again to Tony for also being my C/A Steward for two days and to Mary for the last day. You both were super. A very hard working team.

1st Lauren Marlow with JOTUNHE-IM ELI, Malinois, D, 198.5, Q. Aka loved every bit of the trial. It was such a joy to watch this dog and handler gel like this. Only lost half a mark on the nosework. What a team! Good luck for your future trials.

2nd H Wilson with HOLLOWAY HOT CHOCOLATE, WSD, B, 196.5, Q. Full mark nosework! What a joy, again another super team. Well done and good luck for your future trials.

3rd Wendy Beasley’s STARDELL NAOS, BC, B, handled by Meg O’Kelly, 194.5, Q. Another super round, and steady in her stays. Well done.

4th Frances Webb with NORWULF LUIGI, GSD, D, 191, Q. Full mark sendaway. Monty did very well today, but so did you, Frances. Well done and good luck both of you.

Also qualifying UDEx:

Ann Ketteringham with PADDYDEPAWS AT COALWAY, Cross, B, 184.5

R and F Veazey’s JANALLEN BAKARI, Groenendael, D, handled by Felicity Veazey, 181

Rosemary Turner with KHAMYSKER KALAMITY KATE, GSD, B, 177

Tim Cooper with GLORIOUS GLOSTER, Cross, D, 176.5

Nicky Prestcott with WAGGERLAND TWINKLE, WSD, B, 168.5

STAKE: WD

Judge: JUDITH OWENS-POOLE

Tracklayers: Jeff Poole, Mary Hansell, John West

Square Steward: Liz Hickman

C/A Steward: Jeff Poole

Many thanks to Wessex Working Trials Club for the invitation to judge the WD Stake and to trials manager, Brian Riste, for all the hard work put into organising the trial; as often happens with trials we did have to move ground when one of the farmers needed to get on and cut the grass but that got sorted and the change didn’t cause any problem.

Thank you also to John and Jacquie West for having us to stay, we always feel so welcome in your home.

A huge thank you to all my tracklayers and stewards, who were all great company and did a brilliant job - thank you so much for giving up your time. To everyone in the kitchen who kept us well fed and watered each day - back on the diet when we got home!

Another really big thank you to all the farmers for the use of their land. Tracking was on well grown grass which resulted in some lovely nosework rounds and I thor-

oughly enjoyed my three days judging. Well done to all the qualifiers. To those who didn't qualify, all the dogs showed they are capable but just didn't quite put it together on this occasion.

Thank you for allowing me the opportunity to judge your dogs and good luck in the higher stakes.

1st Jan Baker and MERRYWAY PEBBLE OF JABY, CDEx, UDEx, WDEx, Golden Retriever, track 87.5, Art 20, Sq 32.5, Ctrl 34, Ag 17.5, Total 191.5, Q. Well done, Jan and Hazel, a super round throughout and a pleasure to judge.

2nd Barbara Riste and BALNAKEIL BEINN TARSUINN, CDEx, UDEx, Gordon Setter, 87, 20, 32.5, 30.5, 17.5, Total 187.5, Q. Another good round put in by Hunter - keep faith in him Barbara, he is well capable.

3rd Tony Lockyer and TRIPLE TOP AT HARTSHILL, CDEx, UDEx, Working Sheepdog, 88.5, 20, 26.5, 31.5, 20, Total 186.5, Q. As you would expect from Tony, another youngster putting in a good round; a missed square article cost a higher place.

4th Stephanie Gordon and TADMAR-TON DAYDREAMER TILLY, Labrador, 84, 20, 33.5, 28, 20, Total 185.5, Q. Most of the track marks were lost on the corners in the first 1/3 of the track, once she settled into it she hardly put a foot wrong. Lovely square and jumps.

Also qualifying WDEx:

Gary Atkins and GLENALPINE PETE, CDEx, UDEx, BC, 185.5

Caroline Martin and CARISHILL FREYA, CDEx, UDEx, Golden Retriever, 185

John Fitzpatrick and STAR AT CON-CENN, Cross Breed, 180.5

Gavin Thomson and TRACELYN DANCING IN THE DARK, CDEx – WDEx, German Shepherd Dog, 178.5

Deb Williams and ASTRA TZIAKA, CDEx – WDEx, Border Collie, 171.5

Chris Brooksby and RAVENSBROOK MAID, CDEx, UDEx, BC, 168.5

Dave Self and LAURINCO RED KITE, CDEx, UDEx, Labrador, 168.5

Judy Meekings and LAURINCO RED SKYE AT WINDLEBROOK, CDEx, UDEx, Labrador, 167.5

Sue Burroughes and TARNEDGE VEL-VET, Labrador, 166.5

Martyn Willcock and LUCY THE LAWLESS OF LANCS, CDEx – WDEx, Working Sheepdog, 164.5

Alan Sword and METPOL SPECIAL EDI-TION, CDEx – WDEx, German Shepherd Dog, 164 pts

Qualifying WD:

Martyn Willcock and MURPHY MAGNUS LUMMOX OF LANCS, CDEx, UDEx, Working Sheepdog, 153

STAKE: PD

Judge: Jeffrey J. POOLE

Tracklayers: Val Upton, Andrew Lloyd, Gary Martin

Steward, Searches, C/A and Patrol Round: Judith Owens-Poole

Patrol Round Helpers: Anthony Snook, Vic Snook, Gary Martin, and David Barker.

My thanks to the committee for the invitation to judge back at my 'old' club. It was a real pleasure to be back at Upottery in such good company, and to be blessed with such good weather. Brian Riste did a great job as Trials Manager, despite all the little problems that were thrown at him throughout the week.

To ALL the ladies in the kitchen, who kept us well fed and watered (diet – what diet?),

and to Barbara for the evening meals on Friday and Saturday, thank you. Thanks, also, to Jacquie and John West for their hospitality, opening their house up to us again. We look forward to returning the favour when John comes over to judge for us next year.

My team of helpers out 'in the field' were great company and, as one would expect, did a first class job throughout. My special thanks to you all for giving your time and being prepared to travel so far to help. It was very much appreciated by not only me, but by the competitors.

The tests that I set were (I hope) straight forward, with no tricks or gimmicks, I really do not see the need for them! Without exception the dogs and handlers equipped themselves well throughout.

Congratulations to those who qualified. To those who were not successful on this occasion, I am sure your time is not far away.

1st Lee Payne and WTCh LITTLE ROUGH RHINESTONE, 289/320, Q PDEx, winning the Challenge Certificate, Winner's Trophy and 'Best Patrol Round' Trophy. A well-controlled performance, which produced a very worthy winner. Good luck at this year's KCC's.

2nd Dave Olly and WTCh LITTLE RAYMOND, 272/320, Q PDEx, winning the Reserve Challenge Certificate. Another good performance from this team, well done.

3rd Ruth Cahill and VOMKYNA DELKA, 269/320, Q PDEx. First time I have seen this team work at this level; I think they should have a good future ahead them.

4th Graham Reaney and WTCh TARNEDGE ROUGH DIAMOND, 263/320, Q PDEx. A poor search square was very costly, otherwise not far off the pace.

Qualifying PD:

Bill Richardson and KENOCTO OCTOBERS DELIGHT, 253.5/320

Jo Magness and LIZLINE MANDOLIN, 251/320

Thank you to all the competitors for their sporting attitude, and accepting my decisions with good grace. I look forward to seeing you all again in the future.

STAKE: VETERAN

Judge: TONY LOCKYER

Tracklayers: Val Upton, Adrian Quick & Gary Haim.

Steward: Angie Field

My thanks to Wessex for the invitation to judge the Veteran Stake at this Trial; I have never judged a Veteran Stake before and found it quite different to set a test that didn't have to comply with Rules and Regs!

I did set a normal track and square but with five articles on both the track and in the square; the track articles were placed so that if the older dogs were struggling in the latter parts they would have a good chance of ending on an article. In the event six dogs failed to complete the track but that was for going the wrong way and not from any lack of energy; of the ones that completed the track all recovered at least eight articles, with two getting nine and two getting all ten.

Thanks to Jackie, Margery, and everyone in the kitchen for keeping us well supplied with food and drinks, and again to Barbara for the evening meal. Thank you also to my tracklayers, Val, Adrian and Gary, for a sterling job in unusually short grass for Upottery, as the fields had been cut about

four days previously, and to Angie who was laying squares for the first time and did a great job.

15 entries, 14 ran.

1st Liz Hickman and JAY, only lost five and a half on the track and all ten articles - would still be pushing in Ticket nose-work. Well done.

2nd Juliet Ward and TANYA, litter sister to the above dog and also applies herself well; really liked the ball at the end of the track though and didn't want to give it up to do the square!

3rd Gail Gwesyn - Pryce with YWEN, a few casts on the track and one short in the square

4th Mary Hansell with WICKHAM, fantastic track, I only managed to take one point off, with all the articles, but only three from the square was costly. I am sorry for the fright, Mary!!

To all the rest - you and your dogs acquitted yourselves very well on the day and I hope you all had an enjoyable experience.

* * * * *

BENFLEET WORKING TRIALS SOCIETY OPEN TRIAL

20 July 2013
Hockley, Essex

TRIALS MANAGER'S REPORT

The morning of our first trial in over 20 years dawned - what a relief that the weather had cooled. This was my first time as Trials Manager, duly encouraged by Sandra and Mark Lewindon to have a go; to quote, "The Intro Stake is only usually 8

entries." OH NO! The applications kept coming, final count 18. Unfortunately 3 had to withdraw before the date.

The trial was split into two venues, with the nose-work done at a local farm, and the control section at our club base in Hockley. We had 11 qualify, of which 4 were from BWTS; congratulations go to all and it was lovely to meet new people from different clubs and see the wide variety of dogs participating. My thanks go to Mark and Sandra, their stewards Chris and Les Theobald, and not forgetting all the helpers behind the scenes, especially my chefs for the early breakfasts - without them I could not have arranged the trial.

The Winner was Sue Cunningham from Stowmarket with NOSETOTAL JAX (Gismo) a 4 year old crossbreed.

KAY ABBEY

STAKE: INTRODUCTORY

**Judges: MARK LEWINDON,
C/A; SANDRA LEWINDON,
Nosework Search Steward: Chrissie
Theobald
Control Steward: Les Theobald
Stay Steward: Simon Hall**

Many of us remember the contributions that Benfleet WTS made to the sport in the past and we were thrilled when the society decided to host an Intro Stake. The current Benfleet Committee have never run a trial and have limited experience competing. Sounds like a worrying combination? Absolutely not, the Benfleet "Team" ran one of the most organised competitions we've been involved in. Kay Abbey, the trials manager, organised everything above and way beyond the norm. Well done, Kay and the Benfleet Team - you put on an excellent, well organised and extremely friendly

trial. Hopefully this is a first step back into running trials (fingers crossed).

Both of us were also delighted to have been invited to judge, although we thought that separate judges for the C/A and nosework may be a bit excessive! Happily we were proved wrong with a total of 18 entries. It seems, from discussions around trials, that the jury is still out on the value of the Introductory Stake. I'm willing to nail my colours to the mast and state that this event was exactly why the stake was conceived. All of the entries were people new to trials, giving the sport a try with their dogs. Our heartfelt thanks to the committee for the invitation to judge the stake.

With such a big team, the "thank you" list is also big and our apologies to anybody that we've missed. There was a lot of preparation before the trial, setting up and breaking down, thank you all. Anyway here we go, many thanks to:

Kay Abbey, Trials Manager, brilliant job of managing the trial - well done, Kay.

Lucy and Beth supplying endless cups of tea;

Melissa and Veronica, delicious food from the BBQ (with special care taken of the vegetarian food not being contaminated by the meat tools and grill, thank you);

Simon Hall, Stay Steward;

Simon Brown and Debbie Moore helping with just about everything;

Karen and Tiggy helping to set up;

Frank for being the strong man for all those jobs needing a bit of clout;

Val for being the nosework field steward and organising the competitors;

Liz, the farmer, for the use of her land.

Where would we be without the generosity of farmers allowing us to use their farms?

Chrissie and Les Theobald for being search and control stewards respectively and both for being such good company.

Of the 18 entries, 15 attempted the test. We

both thought that the standard of the dogs was very high and most would hold their own in CD. It was a pleasure to see so many people new to our sport, with some very happy teams, handlers and dogs clearly enjoying a good relationship. A couple still need a little work, but you are doing really well; carry on training and enjoying your lovely dogs. To the eleven qualifiers (yes, eleven), good luck in CD and beyond. Everyone who was there had a super day, helpers and competitors alike, with the added bonus that every competitor went home with a "well done" rosette and dog treats, a souvenir of the first Benfleet Intro.

NOSEWORK:

The articles were: Beermat, 9 x 9 cm; white electric cable, 22 cm long; rubber backed beige vet bed, 4 x 12 cm and a piece of wood, 4 x 10 x 1.5 cm. The field was rough grass approximately 8 - 10" long. When I asked Kay what the field would be like so that I could decide on articles, she sent me a photograph. A really good idea and something other trial managers might want to use. A different combination of articles was achieved by most teams, with only a couple not recovering the required three.

C/A:

The control round started with simple heelwork on lead pattern that took the handlers towards the sendaway point. The teams then completed a recall that moved the teams to a point from where they did off lead heelwork, taking them to the pole indicating the start of the sendaway. The sendaway was approximately 27 yards to a cone against a wild hedge. The teams then completed the agility exercises before doing the sit stay and completing their rounds. I was very impressed with the standard. Usually the jumps, sendaways and stays prove expensive in the CD stake. Fourteen of the fifteen dogs remained in position for the

down stay, eleven teams qualified in the agility, five with full marks, nine teams scored 10 for the sendaway with a further four achieving 8 or more.

1st Sue Cunningham with NOSETO-TAIL JAX, XB, D, 'Gismo', 97, Q. Very competent round with Sue losing half a point on the retrieve and square, and 1 point on the control field. A lovely boy who is definitely ready for CD and beyond.

2nd Angela Gourd with SEZANNE LARENTIA, BSD Terv, B, 'Tia', 96.5, Q. Tia was the only dog to achieve a full mark control round - well done. I know you were very nervous - don't be, she's lovely.

3rd Jade Lindsey handling Mr and Mrs S Dickenson's VONHAUSWOLF PHOEBE, GSD B, 'Mercy', 96, Q. Jade, you've been taught well and have a super dog; once you get over your nerves and relax, you will go far.

4th Fiona Pindar with DIANDE SUMMER ROSE, GSD, B, 'Maggie', 94, Q (after slight hiccup with scores, apologies). A polished nosework round with Fiona only dropping 1 point and only five further points lost on the control field.

Also qualifying:

Pat Handfield with DIAGEMTAS PERFECT LYRIC, BC, B, 'Lyric', 93 (apologies Pat, the scoreboard hiccup knocked you off the 4th place). An excellent control round only losing 0.5. Some slight dropping of articles were costly today but one of the only two dogs to get a full mark retrieve. Well done.

Simon Brown with KENTISH KNIGHT, Working Cocker, D, 'Jasper', 92. Super team, and a real pleasure to watch this strong little character work. Simon, you've trained him well and the only other team to get a full mark retrieve. Good luck in CD. Juliet Maskell with KAMARDA JULIETS

DREAM, BC, B, 'Dream', 90. A very sweet dog who worked very nicely. Well done.

Henri Chidgey with BLACK KNIGHT OF ARDLEIGH, XB, D, 'Bailey', 88.5. I know Bailey has been challenging on occasions, you are doing really well with him, Henri. Well-handled on the control field, only losing four marks and full marks agility. Keep it up.

Elaine Mills with WILLOWRISE HONEY, LAB, B, 'Poppy', 87. Bit of a hiccup with the retrieve but followed by a good square. Held it all in place on the control field, another team achieving full marks for the agility. Well done for holding it all together.

Debbie Moore with REDSTUBBLE LADY GEM RIOJA, LAB, B, 'Amber', 84.5. Little bit of dropping in the square, but a happy dog with a nice attitude. You can do well when you hold it together. Well done.

John Mayes with PANOMARA TESTOROSSA, ESS, D, 'Bill', 73. Bill was a bit "self-employed" in the square and went his own way a bit on the control field, but, with John's experience guiding him, he got all three out of square and did enough to qualify on the control field.

Good luck to Benfleet WTS in all their training and trialling. We know you are talking of hosting CD next year, based on this trial it will be a very good competition. Well done, Benfleet WTS.

* * * * *

NECWTS OPEN TRIAL

19 – 21 July 2013
Alnwick

STAKE: UD

Judge: PAM CUTHBERT

Thank you to NECWTS for asking me to judge. What a fabulous trial this is, headed by Jacquie Hall as trials manager and supported by her team from North Northumberland Dog Training. Thanks to the ladies in the kitchen and everyone who supplied all the home baking - delicious.

Thank you to my tracklayers and stewards for giving up their time to help. Saturday's team were Roy and Penny with Vicky stewarding and laying squares, and Sunday's Lol and Julz, with Sharon stewarding and on squares - great company both days. Thanks also to Lesley for keeping the score sheets.

17 entered, 13 ran. There was a great variety of breeds, from tiny x-breed, Dill (under 10'), min English Bull Terrier, Rott, Aussie, GSD, Collie, Dobe, Weim. Schnauzer, Labradoodle and Spaniel! Is this a record for the most breeds in one competition?

Tracking was on grass of between 6" to 18" in length, the ground was parched and dusty underneath. I was surprised given the conditions how few handlers offered their dogs a drink after tracking.

Track articles - pack hankies, 6" electric cable; square articles - 3" x 2" folded leather, 4" x 2" foam, metal teaspoon and piece of wooden puzzle. 12 qualified after the track and squares. Control started with heelwork, followed by retrieve and then sendaway, 80 yds to a small cone, the

jumps and finally stays.

1st Suzanne Plumb with Tanzie, BC, 196, Q. Keen little dog who just wants to get on and work. Well done, Suzanne.

2nd Janet Freeman with Solo, BC, 192, Q. Lovely happy partnership; I think we'll be seeing a lot more of this team!

3rd Neil Green-Morris with Kia, Rott, 186, Q. Solid round from this fit Rottie.

4th Helen Watson with Frankie, Dobe, 181.5, Q. Helen ran round the track after her. Keen to work for you, Helen, well done.

Also qualifying:

Kim Astbury with Chase, BC, 180

Shirley Windsor with Flash, Aussie, 178

Joyce Watson with Ceilidh, Labradoodle, 171.5

STAKE: PD

Judge: JACQUI GIBNEY

Tracklayers/Helpers/Stewards/Acting Criminals: Julz Findeisen, Lol Campbell, Avril, Steve Lancashire, Gary Tait, Chris Trevor, Mike Wilson

Thanks to NECWTS, not only for the judging appointment, but for your patience in waiting 12 months: I managed not to break any bones this year, so was able to fulfil a long held invitation! (Thanks too, to Lorna for stepping in last year, we were all pleased you were available and willing to fit in the appointment in what was a very busy year for you).

Jacquie Hall runs this very friendly trial, helped by members of her training club, many of whom seem to cook for the 5000, (do us WT folk have a bit of a reputation for eating well?!) as well as many of the jobs that needs doing at a Trial. Plus the experience of many NEC stalwarts who

tracklay, steward and run criminal. Thank you all for your hard work this weekend, all the good food, Lesley for collating all the scores, and the gofers for ensuring everything was as it should be - it made judging a real pleasure. And Jacquie, well, if you feel stressed as TM, it doesn't show, and you ran a super trial, and thank you and partner John, for the BBQ at your home on Friday. It was the icing on the cake.

In the fields, Julz stewarded the C/A and all teams were successful. On to nosework; Julz and Lol tracklaid expertly on cut silage with good growth, Avril laid the searches well and we lost only one competitor. As the acting criminals were only available for one day, the patrol round was on the second day - with 9 competing, a one day trial wasn't feasible. With the weather as it was, had we asked dogs to complete the whole stake on one day, we may well have had some suffering from heat exhaustion, so it worked out really well.

Many thanks to Steve, Gary, Chris and Mike, who were excellent in their role, and exactly the same for every dog. Julz (right-hand woman of the year), stewarded the patrol round, giving each team opportunity to show their best.

Quarter first, to find a kneeling man in the long grass, search him and escort 50 yards, at which point a man came out from a hide, challenged as he approached, then turned and ran away (Chase). Once apprehended and searched, the dog was sent on the second part of the quarter, to include a hide, find a person in the rough grass, and search him. As the handler re-joined his dog, a man challenged and turned to run (Recall). Then the test of courage - three men being very noisy running at the dog: once the dog had bitten one or more of the aggressors, the handler took charge, and escorted all three, and then the attack on handler was the last part of the test. Thanks

to Bill Richardson for doing a run through with Kali, I'm sure seeing the test worked helped the competitors.

1st JOTUNTEIM ALMA, Mali, and Tom Davies. Drew to run first and was very nervous, but Ruby worked brilliantly and deserved the win. I'm sure she will be a force to reckon with in Ticket. Congratulations: 278/320

2nd THREENINES KATIE, Mali, and Moira Rogerson. Veto's quarter was textbook and faultless, and although 'the little monkey' failed the recall, the rest of her work was super. Well done, Moira; 258/320

3rd FLY BY NIGHT LAD, WSD, and Alan Bexon. Fly worked well throughout the test, unfortunately he was a bit 'sharp' in the hide, and was selectively deaf on the recall, costing him the qualification. 261/320.

Congratulations to you all, best of luck in Championship.

* * * * *

ASPADS CHAMPIONSHIP TRIAL

30 July to 4 August 2013
Ravenscar Village Hall

STAKE: CD

Judge: Suzanne Plumb
Search and Control Stewards: Julz Findeisen and Pat Hodgkins

I would like to express my thanks to the Committee for the invitation to judge the CD stake and to Barry Gilbert for running

the trial. Also, my thanks to everyone involved at the base organizing the competitors, scores, certificates, catering etc.

The two grass fields we worked in were on the cliff top overlooking the sea. Blues skies, sunshine and a slight breeze on both days made a very enjoyable judging experience for me and hopefully a good day out for the competitors and their dogs. As there was a selection of small dogs entered I decided to work them first, because adding the height to the jumps seemed easier to do. All the dogs qualified the nosework section and the control was well done; stays and agility let a few down - the long jump particularly, as some dogs were not confident to clear it.

Thanks go to Julz (Saturday) and Pat (Sunday) for laying the squares, stewarding the C/A and the down stay. You both did an excellent job.

Finally, I did enjoy judging you all, seeing your different breeds working in their own styles, and if you were not successful this time, never mind - with a bit more training I am sure you will qualify CDEx on another day.

Now to the qualifiers:

1st Mrs S A Hughes with OLDOAK YULETIDE BLIZZARD, OES, 95, CDEx. I do admire Sue because she has stuck with and worked this breed in trials for a lot of years. Chewing of the articles lost two points and three more lost on the control. I loved her jumping style. Congratulations on your win.

2nd Mr A Fox with STARDELL MUSCIDA, BC, 94, CDEx. Just half a point lost on the square, three points off the control and second attempt at the long jump. Well done.

3rd Mrs J Freeman with ASHLINDT ARRAN, BC, 93.5, CDEx. Another good square losing half a point, one point off the

retrieve but no long jump marks. I could not take a mark off the control, wonderful to watch.

4th Mrs A Trodd with POMELO GELBERT AT CHELASA, KCCS, 80.5, CDEx. This little spaniel was such a character. The gundog in him came out as he walked down to his square and saw a bird fly across the field, he just had to go and see if he could find it. Once in his square he quickly found articles and luckily he didn't see the hare that stood and watched him do it! I know you were over the moon getting the qualification with him, Ann. Well done.

Also qualifying CDEx:

Mrs D Yeatman with LLANWOPS TARGA AT ROMSEY, Lab, 80.5

Mrs L J Coull with CALLISAE EXCLUSIVE, Weim, 78.5

STAKE: UD

Judge: LIZ DE UNGER

Tracklayers: Tracey Park and Eric Carpenter

Steward: Liz Mills

Thank you to ASPADS for asking me to judge, and to Barry Gilbert, a very efficient and helpful Trials Manager. Thank you to Linda Gilbert, Jan Darby and Mary Hardcastle for all their hard work at base, and to all the ladies in the kitchen, who kept us so well fed.

Thank you to Eric and Tracey, who laid excellent tracks, giving all the dogs every chance of success. A special thank you to Liz, who was a first class steward, both for the C/A and the squares. You were all great company. Lastly, to the competitors, who I enjoyed judging, thank you, and well done to the qualifiers; to the others, who will soon qualify, good luck in the future.

WELSH KENNEL CLUB OPEN TRIAL

We started with the stays and three dogs broke. Next was the C/A, and five dogs qualified in this section. Tracking was on well grown grass; five dogs qualified on the nosework, but sadly only two dogs qualified overall, out of nine competing.

1st Carol Grant with DREAGANTA ROB, BC, D, 186.5, Q. Robbie did a very steady track, well handled by Carol, gaining 87.5 + 20 and 33 for the search square. A lovely control round, only losing three marks, with 14 for the agility, Robbie failing the long jump. A very well-deserved win.

2nd Julie Paul with DIANDIE SUMMER STORM, GSD, D, 171, Q. Another steady track for 82 + 20, and then 17 for the search square, with Percy recovering three articles, but work is needed on the holding and mouthing. An excellent control round, with 9 for the sendaway and a full mark retrieve. Half a mark was lost on the agility for anticipation on the handler's return. Very well done.

3rd Irene Seymour with HAUSBALLEY KALAB, GSD, D, 178, NQ. Our sad story of the day, as Xamm broke the stay at 9.5 minutes. He did the best track, with 88 + 20, and 33 for the square, and full mark heelwork, retrieve and jumps. Well done.

4th Judith Stamp with LITTLE MADAM MABELLINE, Cross, B. This little springer / collie cross worked her heart out on the track. It was a joy to watch, gaining 87 + 20, and then 25 for the square, where she didn't get her head down but still found three articles, with nice clean pickups and retrieves. Good control, but sadly failed the agility, but not from lack of ability. Good luck for the next time, and well done.

* * * * *

15th - 18th August
Blandy Hall, Laleston, Bridgend

STAKES: UD AND WD

Judge: JANETTE HICKSON

Tracklayers: Gary Atkins and Linda Reynolds

Search Steward: Dave Powell

C/A Steward: Linda Reynolds

I would like to thank The Welsh Kennel Club for the kind invitation to judge the UD and WD stakes at their open trial. Especial thanks to Lindsey Poole, the Trials Manager, who ensured everything ran like clockwork and looked after us all so well. Julie Atkins did a sterling job manning the base and looking after the kitchen, despite having recently undergone an operation on her foot. Out in the fields I had a superb team - Gary Atkins and Linda Reynolds, who laid the tracks for all four days; Linda also doubled up by stewarding the C/A each day and Dave Powell, who laid all the squares. With such a great team I was able to get on with my role of judging the tests I had set, confident that every competitor had the same chance of success.

Perhaps the most important thanks must go to our wonderful farmers for the use of their land and making us so welcome - without their continued support we would have no trials.

The weather threw everything at us, overcast followed by squally showers but very humid on Thursday and Saturday. Overcast and humid mornings became very hot and sunny by lunch time on Friday and Sunday. There was a very strong breeze all four days.

I would also like to thank the competitors for entering under me and accepting my decisions so cheerfully, whether they were lucky or not on the day. For the majority the standard of work in both stakes was very high, with good clean handling and happy motivated dogs, which can only be good for our wonderful sport.

UD STAKE:

11 entries and all 11 worked.

For this stake the track articles were 6.5 cm x 4.5 cm ribbed green carpet and 14 cm long piece of green hosepipe, and the square articles were a yellow shotgun cartridge, 7.5 cm x 4.5 cm piece lime green rubber matting, 8 cm x 1.5 cm piece of wood dowel and 10 cm piece knotted hemp string.

Only two dogs failed to track and one dog did a super track but sadly with no articles, one dog only got one article on the track and seven dogs completed the track with both articles. Seven dogs got all four square articles, two got three and two got two articles. The control round was largely well carried out, with the jumps and stays taking their usual toll.

1st Barbara Griffith with TOPPER OF EASTWAYS, WSD, D, 191, Q. After super nosework from this team Barbara kept Topper focussed to produce an almost faultless control and agility – congratulations on this very well deserved win.

2nd Catherine Manfield with GLENALPINE OZZY ZIG, BC, D, 187, Q. Another dog who made the nosework look easy, followed by a lovely control round. Agility was a bit sticky but well done, Catherine, on keeping your nerve, allowing Ozzy to gain this place – well done.

3rd Gwen Robinson with FRACILIAM BARNEY, GSD, D, 184.5, Q. Beautiful and thoughtful handling pro-

duced some lovely nosework from this strong dog. Another handler who kept her nerve to produce the best from her dog - well done.

4th Lorna East with GLENALPINE TOSCA, BC, B, 185, NQ. Another team who produced some lovely nosework and good control; couldn't quite manage the jumps today, however, a very well deserved place.

WD STAKE:

14 entries, 12 worked

The track articles for this stake were a red shotgun cartridge and 6 cm x 6 cm piece green and beige carpet. The square articles were 5.5 cm x 7 cm piece black rubber net, green milk bottle top, half a wooden peg and an 8 cm x 4 cm piece green felt.

Two dogs failed to track; one dog found one article and nine dogs completed the track with both articles. One handler chose not to do the square, three dogs got four articles, five got three and three got two articles - no particular article seem to present an issue. As with the previous stake, the control was largely well carried out, with the jumps and stays determining the qualifiers.

1st Rosemary Turner with KHAMYSKER KALAMITY KATE, GSD, B, 186, Q. A heavy rain squall hit this team half way round the track but Katie hardly noticed it; she followed up with a good square and a competent C/A round, well handled by Rosemary. Congratulations on your well-deserved win.

2nd Nicky Prescott with WAGGERLAND TWINKLE, WSD, B, 179, Q. Lovely track, Twink really enjoyed herself. After a bit of a naughty with the retrieve Nicky took control and steered Twink through the rest of the test to gain this qualification and place - well done.

3rd Judith Stamp with LITTLE MADAM MAYBELLINE, Crossbreed, B, 174, Q. This delightful little dog went round the track on rails for full points. A competent C/A gave this team the qualifier and placing – well done.

4th Felicity Veazey with JANALLAN BAKARI, Groenendael, D, 168, Q. Another dog doing a good track followed by lovely control; Jet really seemed to enjoy himself – well done.

Also Q Com: Kevin Johnson with VOM-KYNA ECHO, GSD, D, 160.5

STAKE: TD

Judge: GARY HAIM

Track Layers: Charlie Taylor, Ruth Cahill

Square Steward: Sandra Haim

Many thanks to the Welsh Kennel Club for inviting me to judge the TD Stake at their Open Trial. Thanks also go to Trials Manager Lindsey Poole and to Linda Reynolds for all their hard work in making sure this trial takes place.

Thank you to Sandra for laying squares and scribing the control and Julie Atkins for running the base and the kitchen, and also to my track layers, Charlie Taylor and Ruth Cahill.

The weather on Saturday was driving rain and wind and the Sunday was sunny and warm. The tracking land was excellent.

1st Terry Austin with MANPOL VIXEN, GSD, 205.5, Q. Excellent control round followed by a very focused track from this young bitch. Zazz is not the easiest dog to handle but Terry did so in a very calm manor which brought out the best in her. Well done.

2nd Gavin Thomson with TRACE-LYN DANCING IN THE DARK, GSD, 204.5, Q. Good control round followed by a track that Jetta seemed to find quite hard, but she got all three articles and ended with a lovely square. Well done.

3rd Jan Baker with MERRYWAY PEBBLE OF JABY, Golden Retriever, 200.5, Q. Only lost 1.5 on control and had full mark jumps; lovely track and square but left one article on the track which proved costly. Well done.

4th Joyce Tibbetts with VONHAUS-WOLF MAUD, GSD, 197, Q. Best control round but no return on the scale today; Kari found the track easy so tended to track with her head up and missed the second article. Finished with a good square. Well done, Joyce, and good luck in Ticket.

Also qualifying:

Gary Atkins with GLENALPINE PETE, BC, 190.5. Only lost half a mark on control, full mark jumps followed by a near faultless track until Pete went the wrong way with just the last leg remaining; he went onto get three out of the square. Pete was the only dog to qualify in the horrible conditions on the Saturday. Very well done and good luck in Ticket.

Chris McRae with TRACELYN LADY IN BLACK BY ZOOX, GSD, 186. Nice control round but did not get the long jump today; went onto do a good track with two articles and a nice square. Well done.

* * * * *

**HAMPSHIRE WORKING TRIALS
SOCIETY
CHAMPIONSHIP TRIAL**

19 - 24 August 2013
North Boarhunt, Hampshire

STAKE: UD

Judge: LYNNE WATKINS
Tracklayers: Gary Atkins, Eric Carpenter
Search and C/A Steward: Yvonne Carpenter

Thank you to Hampshire for the invitation to judge this stake; Jean and her team did a great job in the new base. I was so lucky with tracklayers and steward - what a wealth of experience - which meant I could totally focus on the dogs. A big 'thank you' to the three of them.

It is always a privilege to watch young dogs work. Congratulations to those who qualified; the jumps were the main undoing of the others.

1st Suzanne Jaffa and JANALLA BAROQUE (Otto), BSD (Groendael), D, 197, Q. Suzanne handled Otto sensitively to get the best from her boy; the marks show how well Otto responded. A very well deserved win.

2nd Daphne Mussell and CHINA BOY (Iska), NSDTR, D, 173, Q. This Duck Toller got round virtually the whole track with barely a cast until he gave us some very anxious moments on the penultimate leg, but Iska came good for Daphne. Well done.

3rd Rosemary Turner and KHAMYSKER KALAMITY KATE (Katie), GSD, B, 167.5, Q. Katie showed real enthusiasm which was undeterred by Rose-

mary's tumble on the track. Handler and dog were equally determined. Well done.

4th Frances Webb and NORWULF LUIGI (Monty), GSD, D, 176.5, NQ. This team works well together and Frances and I both know Monty can fly that scale; his confidence will get there – glad this was a freebie!

STAKE: WD

Judge: KATE PEYTON
Tracklayers: Sue Ashby, Vana Moody, and Gary Martin
Square Steward: Tim Cooper
Control Steward: Yvonne Carpenter

Thank you to Jean and to Hampshire WTS for the invitation to judge, and also to Jean for her hospitality over four days. I had a really nice time.

Much appreciation for accurate and consistent tracklaying to Sue, Vana and Gary. Thank you to Tim for laying all the squares and being my right hand man and navigator. Yvonne, as always you were a great steward – thank you. You were all efficient, great company, and made things run just right. I also got good back up from the base, nice food, and speedy processing of marks and places. Thank you to the kitchen and to Jan for scoring etc.

There were 22 entries and 19 ran. Tracking was on grass, the weather was hot and sunny and conditions were not easy. Those who got round the track did well. I saw some excellent work – and some that was less so. That said, all competitors gave it their best shot and for those who did not make it, I'm sure the qualification will not be long in coming. Thank you for your participation.

1st Sue Jones with DURSTONE

BRYN, CDEx – UDEx, WSD, 192.5, Qualified WDEx. Congratulations, Sue - a good all round result from a determined dog and experienced handler developing into a consistent and formidable team. He does love his articles!

2nd Gary Atkins with GLENALPINE PETE, CDEx – UDEx, BC, 191, Qualified WDEx. Well done, Gary – as always, you and Pete produced a round which demonstrated the cohesive and happy relationship that you and Pete seem to have in spades.

3rd Helen Brown with MANPOL SAPPHIRE, CDEx – UDEx, GSD, 183.5, Qualified WDEx. Nice nosework round – one or two hiccups on control but not enough to stop you. Well done.

4th CC Guard with LENYAM MA-RAUDER OF PHILKINDY, CDEx – UDEx, Lab, 178, Qualified WDEx. A happy pair – Harry was maybe at times a little over enthusiastic which produced some inaccuracies but overall a good result.

Also qualifying WDEx:

Angela Fields with JUST RED ROBIN, CDEx – UDEx, Lab, 175

Sharon Carter with QUADET DANSA AT IVYMOOR, CDEx – UDEx, Weim, 172

Judith Owen with BRENTMOOR JAY, CDEx – WDEx, BC, 170.5

STAKE: TD

Judge: SHEILA TANNERT

Tracklayers: Nigel Hines, Tom Darby, Eric Carpenter

Steward: June Hines

Thank you to Hampshire Working Trials Society for the invitation to judge the TD stake. I would like to thank Jean and her team of superb helpers for running the trial.

Many thanks to my tracklayers Nigel, Tom and Eric - you all did a super job. Thank you to June for doing the searches and stewarding the control - you were fabulous company all week.

The weather was really hot for most of the week - June managed to wear her sunhat for 3 of the 5 tracking days; she assured me this was a record. The tracking land was grass and I saw some lovely tracks during the week. Thank you to all the competitors for entering under me.

1st Ken Coleman with SHERINGEM MAC, CDEx - TDEx, BC, 205.5, Q. Congratulations on winning the ticket, Ken. Mac did you proud; tracked in the heat of the day on Wednesday recovering all the articles from the track and square and did a lovely speak after the track. You both kept it together on the control round to produce the winning round. Good luck at the KCC's.

2nd Sue Ashby with WTCh THE TITAN, CDEx – TDEx, WSD, 204.5, Q. Congratulations Sue on the Reserve Ticket. What a super track Titan did - a pleasure to watch; missed an article in the square this time. Again a nice control round.

3rd Liz de Unger with WTCh STYPERSON ROYCE, CDEx – TDEx, Lab, 204, Q. Another super track and search, but the speak wasn't one that suited Sohrab and proved costly. He did a lovely control round; well done, Liz.

4th Emma Baker with JESSZAKS RICOCHET RIK, CDEx – TDEx, WSD, 203.5, Q. Rik worked really hard on the track but managed to recover all the articles. On control day you did a really nice round. Well done.

Also qualified TDEx:

Barrie Gilbert, GLENALPINE COS-WORTH, CDEx - WDEx, BC,

202.5

Julie Skipp, ZAK OF SKIPAWAY, CDEx – WDEx, WSD, 202.5

Ruth Payton, CORIES BLAZING STAR AT KALIAZAR, BegEx, CDEx – WDEx, BC, 198

Tony Lockyer, WTCh DOUBLE TOP AT HARTSHILL, CDEx – TDEx, WSD, 197

Jill Carruthers, WTCh VOMKYNA DARCY, CDEx – TDEx, GSD, 193

Jane Wood, LUDGATE POWER ‘N’ GLORY, CDEx – TDEx, BC, 192

Gary Martin, MAGIC DARK SHADOW, CDEx – WDEx, Lab, 190

Andy Baker, WTCh SID THE LEMON SQUEEZER, CDEx - TDEx, PDEx, BC, 186

Gary Haim, WAGGERLAND DILEMMA, CDEx – TDEx, WSD, 186

Paul Adams, SHERINGHEM GLYNN, CDEx – TDEx, BC, 183

Marjorie Lee, SYN MISCHIEF’S PARTNER, CDEx - WDEx, WSD, 182.5

Les Allen, GARRETHALL QUENYA, CDEx – TDEx, Lab, 182

Mick Head, SHERINGHEM JAZPER, CDEx – TDEx, BC, 180.5

Wendy Magyar, GLENALPINE TED, CDEx – WDEx, BC, 179.7

Qualified TD:

Judith Owens-Poole, FIRCROFT BELISIMA, CDEx – WDEx, PWD, 165

* * * * *

BAGSD OPEN TRIAL

25th August 2013
Oxspring

TRIALS MANAGER’S REPORT

Thank you once again to our farmers, the Bettyes and the Stuarts, for providing us with all the land for tracking, and to Carol and Arthur Rivers for providing the brilliant base, and running the outdoor catering with the help of Karon - you were brilliant!!

This year our judges were:- PD Stake, Malc Snowden; UD Stake, Joan Snowden; CD Stake, Steve Smith. They were all very efficient, and gave every competitor equal consideration. In PD there were 15 entries, and same in UD, unfortunately only one entry in CD.

The weather stayed bright and mainly sunny, so that was a bonus after last year’s deluge. Thank you to my usual helpers, Fran and John Atkin, Steve Smith, Chris Trevor, Steve Lancashire, Anthony Snook, Martyn Wilcock, Tom Davies and Linda Newbold - you all did a great job!!!!!!

A special thank you goes to David Waite for preparing all the paperwork before the trial; it makes my job a lot easier when you can rely on efficient helpers, so a big thank you once again. I would also like to thank my wife, Glenys, for all the preparation involved before the trial, and manning the base during the trial and completing all the paperwork after the trial. I hope everyone enjoyed the weekend as much as us, so hopefully we’ll see you all back again next year. Happy Trialling.

BRIAN PAGE

STAKE CD

Judge: STEVE SMITH
Search/Control Steward: Jean Archer

Many thanks to the committee at BAGSD for the invitation to judge CD at their Oxspring trial, and thanks to Brian and Glenys

Page for making Jean and me welcome at this lovely trial set in the hills around Penistone. The ladies in the kitchen did a brilliant job of keeping us fed and watered - thank you. Last but not least, thank you to Jean for stewarding in the morning and also for looking after the dogs in the afternoon while I was away tracklaying.

1 Entry, 1 Ran.

1st Gordon Fossard with PRINCE TYE, WSD, D, 64, NQ. Overall a good round from this exuberant little Collie, qualifying in the control round, but unfortunately it was the jumps that were the problem. Well done.

* * * * *

SCOTTISH WORKING TRIALS SOCIETY CHAMPIONSHIP TRIAL

29 August - 1 Sept 2013
Lauder

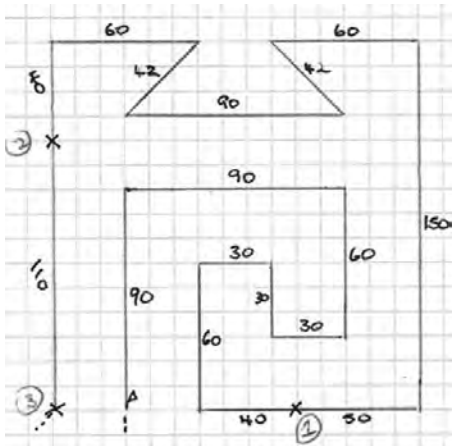
STAKE: TD

Judge: LINDA NEWBOLD
Tracklayers: Anne Bedford, Eric Carpenter and Derrick
Search Stewards: Lorraine Wilson (Thurs), Nick McMechan (Fri/Sat)
Control and Agility Steward: Lorna Cottier

I'd like to thank SWTS for the invitation to Scotland to judge in such a lovely location, and for ensuring, for the most part, great weather. Thank you to David and June

McPhillips, and all the behind the scenes helpers, for all their hard work, during and prior to the trial, to everyone who helped out in the base sorting everyone out and doing all the scores and certificates. A big thank you to the ladies who worked their magic by providing some great meals in a tent using a camping stove - a great job. Thank you to my tracklayers - tracklaying on the heather is not easy!! But they all did a brilliant job. Thanks to my square stewards, Lorraine and Nick, for laying perfect squares and for being great company. Lorna kept me company on Sunday, doing a very professional job stewarding the control and agility and keeping everything flowing smoothlythanks for all your help and your great company.

Tracking was on varying lengths of heather, which the dogs didn't seem to find a problem; the same cannot be said for quite a few of the handlers, who struggled to walk, but only one person fell over.....me! There were 36 entries and 28 actually worked. 11 sadly failed the track, 4 teams competed the track but missed articles on the track and 2 teams only retrieved one article from the square, leaving 11 teams qualifying in the nosework section. The weather was dry and breezy for the 3 days of tracking but all changed on Sunday when the temperature dropped, with the occasional shower and very strong winds.....but no snow!!



I set up a very straightforward test, starting with the speak with the handler sitting in a chair with their back to the dog, followed by a short section of heelwork and then the sendaway, which was 120 paces to a very obvious white sink, then a right redirect of 130 paces to a section of rough ground and a huge pile of stones. The agility section was completed by all the dogs, with the high winds not appearing to cause any problems. Sadly one dog failed the stays so we finished with 10 qualifiers. Thanks to all of you who entered.

1st Gary Haim with WTCh WAGGERLAND DILEMMA, 209, Q, winning the Ticket and the best nosework. Super track, recovering all 3 articles, followed by a full point square - lovely to watch. A nice control round and full point agility kept Gary and Flynn in the lead. Congratulations and good luck for the 2014 KCC's. Track 95.5/30, Sq 4/35, Control 28.5, Agility 20.

2nd Glenys Page and WTCh BILKO'S GLORY 204.5, Q. Another impressive track with 3 articles and recovered all 4 from the square. Sam was a bit enthusiastic on the speak, losing a few marks, but did one of the better sendaways and redi-

rects of the day. Congratulations. 92.5/30, 4/34, 28, 20.

3rd Wendy Beasley with STARDELL LUNAR, 201, Q. Great track to watch from this experienced team; would have been a different result if Wendy had brought back the first article instead of the lovely bunch of heather Lunar presented her with! 4 articles from the square and a very impressive control and agility round. Congratulations. 94/20, 4/34, 33.5, 19.5

4th Diane Turner and STARDELL SUBRA, 193, Q. Lovely steady track and square gave this team a well-deserved qualification. Congratulations. 94/20, 4/33, 26, 20

Also qualifying TDEx:-

Paul Bryan with KIPCROFT ETERNAL FLAME AT BRYNBOURNE, 191.5

Sue Ashby with WTCh THE TITAN, 191.5

Yvonne Carpenter with HEX AT CARFIELD, 185.5

Tracy Park with WAGGERLAND TYNE, 183.5

Heather Donnelly with WOOLRAM LOTHARIO, 182.5

Barry Gilbert with GLENALPINE COSWORTH, 182.5

Track articles – 4 inch piece of green Christmas tree, 4.5 x 0.75 inch beige carpet, 8 inch green guide rope with knot tied in middle. Square articles – 5 inch green bailing twine, 1.75 inch diameter wooden ring, half a peg, 1.5 x 1.5 inch piece of thick grey material.

**YORKSHIRE WTS
CHAMPIONSHIP TRIAL**

On: 27th & 31st December 2013
Beeford Village Hall, Main St, Beeford YO25 8AY

Judges:	TD Stake	Judy Meekings
	WD Stake	Ray Lea
	UD Stake	Ann Bedford
	CD Stake	Laura Bardwell

Entry Fees:
TD: £20 WD/UD: £18 & C.D.Stake: £14
Deduction of £1 for paid up members.

ENTRIES MUST BE RECEIVED BY WEDNESDAY 27TH NOVEMBER 2013

Schedules/Entry forms, (including the fees and S.A.E) to the Trials Manager.
Jeff Margreaves, Tylehurst, Moor Lee Lane, High Eggborough.
DN14 0PY Tel: 07967 485967

**SCOTTISH KENNEL CLUB
CHAMPIONSHIP TRIAL**

Jedforest Deer & Farmpark,
Mervinslaw, Jedburgh, Roxburghshire,
Wednesday 27th November to Sunday 1st December 2013
(May go forward if necessary)

Judges	TD	Lorna Cottier
	WD (all work in one day)	Bill Richardson
	CD (all work in one day)	Ann Bedford

Entry Fees – Tracking Stakes £20.00, CD Stake £15.00.
(SKC Members £3.00 reduction)

ENTRIES MUST BE RECEIVED BY WEDNESDAY 6TH NOVEMBER 2013

Schedules/Entry forms, (including the fees and S.A.E) to the Trials Manager.
Sheila Shearer, 2 Plenderleith Cottages, Jedburgh,
Roxburghshire, TD8 6NE
Tel. 01835 840664



ASPADS WORKING TRIALS SOCIETY

OPEN WORKING TRIAL

At: Enfield, ending on Sunday 8 December 2013

Judges	WD	John Wykes
	UD (1 day)	Kate Wykes
	CD and C & A	Rita Banfather

ENTRIES TO BE RECEIVED BY: WED 6 November 2013

Entries with entry fee (**Please Enclose SAE**) to:

Vana Moody, 35 Chace Avenue, Potters Bar, EN6 5LZ

Tel: 01707 651724

Entry Fees for 2013 Trials: Tracking Stakes, £21.00 – CD, £16.00 – Veteran £5
Fully paid up members may deduct £2 per entry

For Schedules and/or Membership Information (*S.A.E. please*)

Contact: Hon Sec: Judy Meekings, 189 Guildford Road, Lightwater, GU18 5RB.

Tel: 01276 475225 Mob: 07795 086843 Email: judy.meekings@yahoo.co.uk

UK sole agent
for Schweikert
Equipment



Call Now for your new
Catalogue
2013

ISO 9001: 2008



Integrated
Quality
Standards



REGISTERED FIRM

Opening Hours:

Monday to Friday

9am to 5pm

Imperial Centre
41 Gatwick Road
Crawley, RH10 9LD
Tel: 0845 6532145
Fax: 0845 6532149

Email: sales@johnhumphris.com

Web: www.johnhumphris.com

Specialists in

Protection Equipment

Nosework

Agility Equipment

Leads and Collars

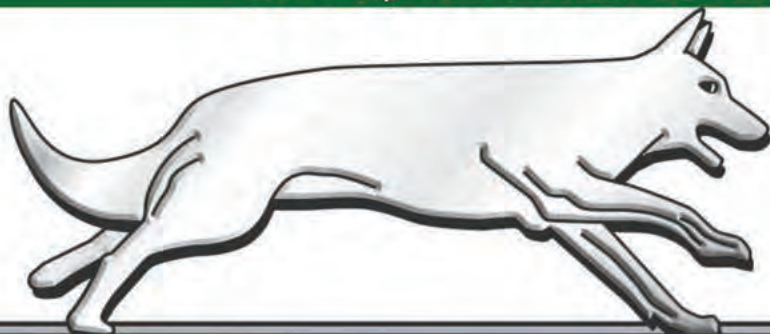
Toys and Dumbbells

Grooming

Kennels and Cages

Handler Equipment

DVD's, Retrieval & Tug Toys



JOHN HUMPHRIS LTD

Serving You...